



## CHECKLIST FOR PREPARING THE SYSTEM

Before Installing BOLT+ On Web please go through the following Check List.

### SOFTWARE /HARDWARE PRE-REQUISITES FOR INSTALL

The various Pre-requisites for BSE BOLT+ On Web are detailed as follows

#### SOFTWARE /HARDWARE PRE-REQUISITES

HARDWARE	SOFTWARE
Min 1 GB RAM or above Screen Resolution - 1024X 768 Display)	Operating Systems Supported - OS - WINXP SP2 or SP3, WIN 7, Software - MS Dotnet Framework 4, **3391-WindowsInstaller-KB893803-v2-x86**,wic_x86_enu**

\*\*These set ups are to be used in case we face error while installing the Dot Net Framework Set Up

## NETWORK PRE-REQUISITES FOR INSTALL

### NETWORK PRE-REQUISITES - INTERNET

SERVICES	HOST	PORT
BSE BOLT+ On Web Login Server	boltplusonweb.bseindia.com	443
BSE BOLT+ On Web Broadcast Server	boltplusonweb.bseindia.com	9092,9091
BSE BOLT+ On Web FTP Server	boltplusonweb.bseindia.com	20,21

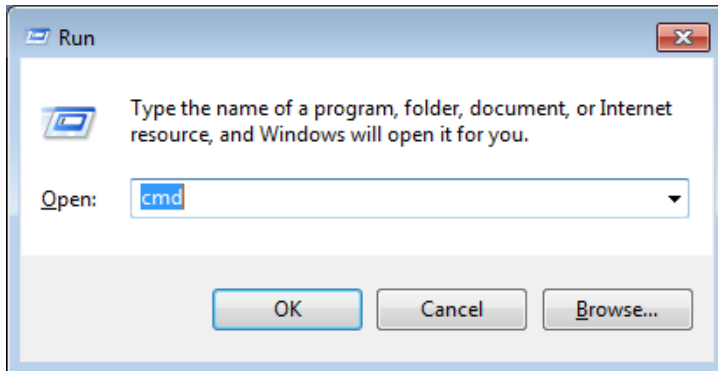
### NETWORK PRE-REQUISITES - BSE LEASED LINE / BSE Private Network users

SERVICES	HOST	PORT
BSE BOLT+ On Web Login Server	10.1.101.116	6080
BSE BOLT+ On Web Broadcast Server	10.1.101.116	9092,9091
BSE BOLT+ On Web FTP Server	10.1.101.116	20,21

## MANUAL NETWORK SERVICE AVAILABILITY CHECK

To manually check the connectivity use telnet

Go to Start -> Run or press windows key + r and enter cmd



In the command prompt type

Telnet (*Service host ip*) (*port*)

Example:

Telnet boltplusonweb.bseindia.com 443 (To Check Internet Connectivity)

```
C:\>telnet boltplusonweb.bseindia.com 443
```

Telnet 10.1.101.116 6080 (To Check Leased Line Connectivity)

```
C:\>telnet 10.1.101.116 6080
```

If available it will give a blank screen with a blinking browser close the window.

Else it would give an error message saying the connection cannot be established. If you receive such an error kindly request the Network Administrator to open the Ports on the host ips given.

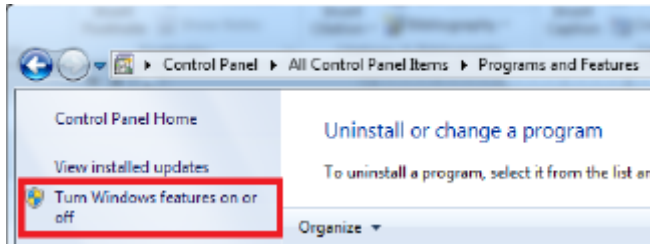
## NOTES

On Windows 7, In case Telnet client is not installed by default, it will show you an error

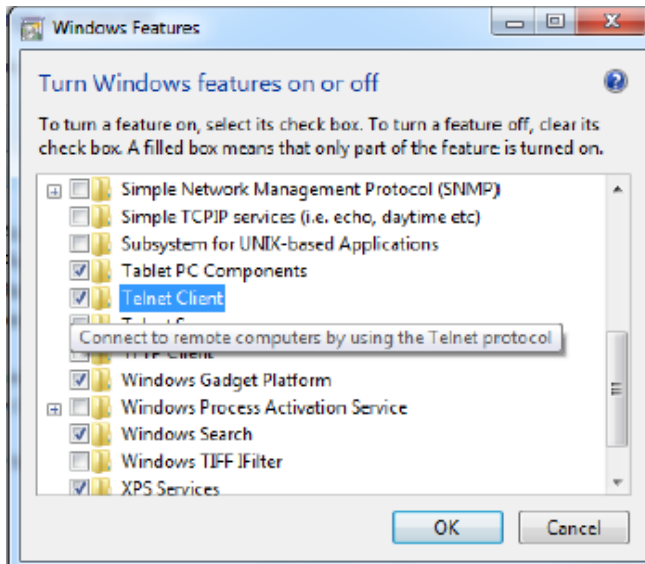
To configure Telnet

Go to Control Panel -> Programs and Features.

On the left click on Turn Windows Features On or Off



Select telnet client and click on ok to install the telnet client.



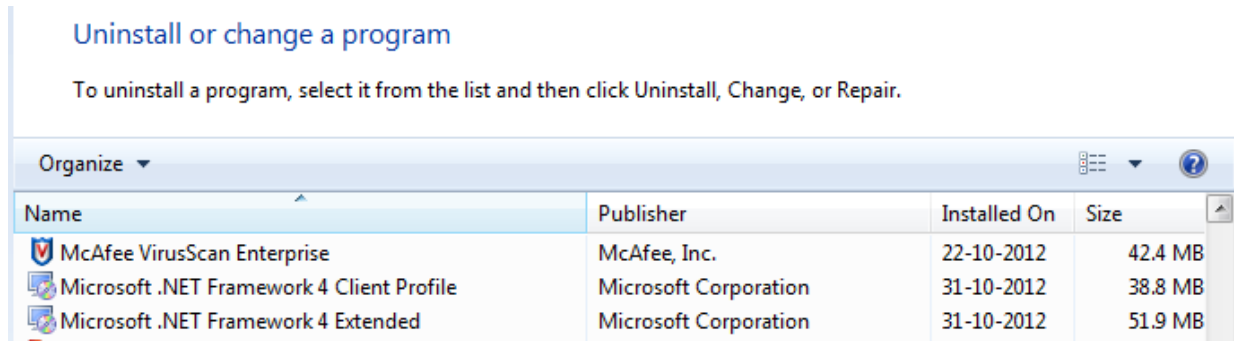
**INSTALLING BOLT+ On Web – INITIAL CHECK**

1.) If BOLT+ on Web is already installed then uninstall the earlier version of BSE BOLT+ On Web and remove the Folder from your computer.

2.) Check whether .NET framework 4.0 has been installed on your computer

For Windows XP: Control Panel -> Add/ Remove Programs

For Windows VISTA / 7: Control Panel -> Programs and Features

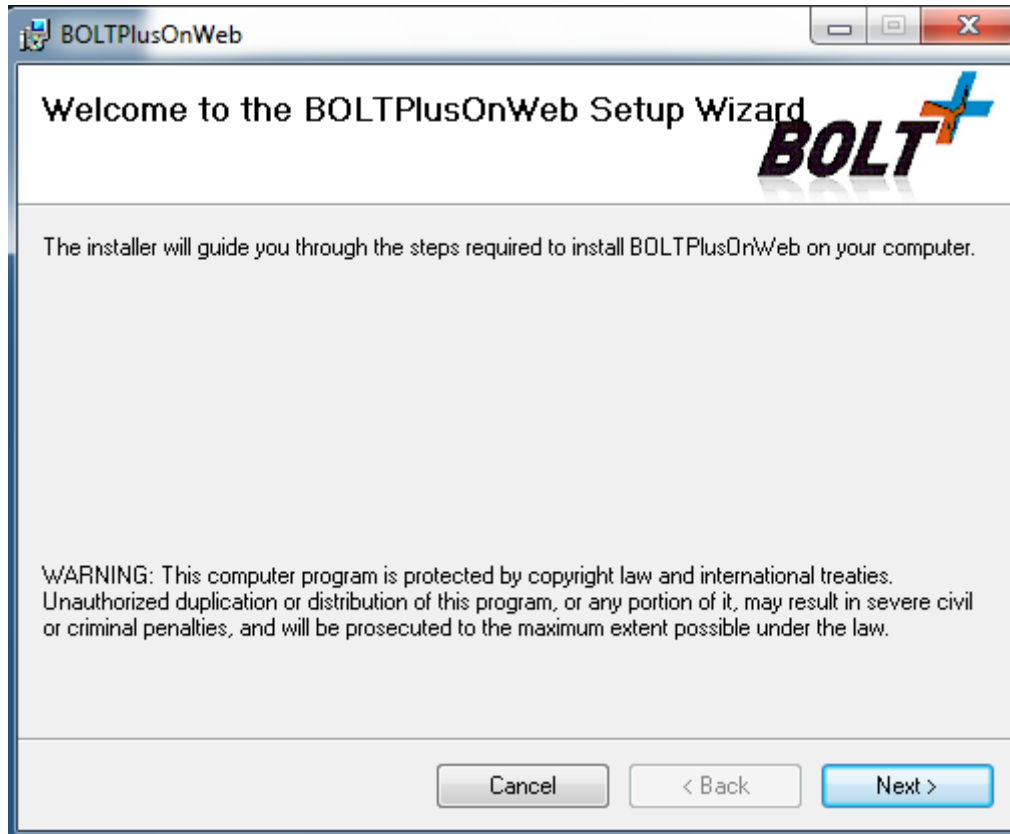


3.) Check whether you have administrative rights to install BSE BOLT+ On Web or else for Non Administrative users (Win XP) install in any location other than "Program Files".

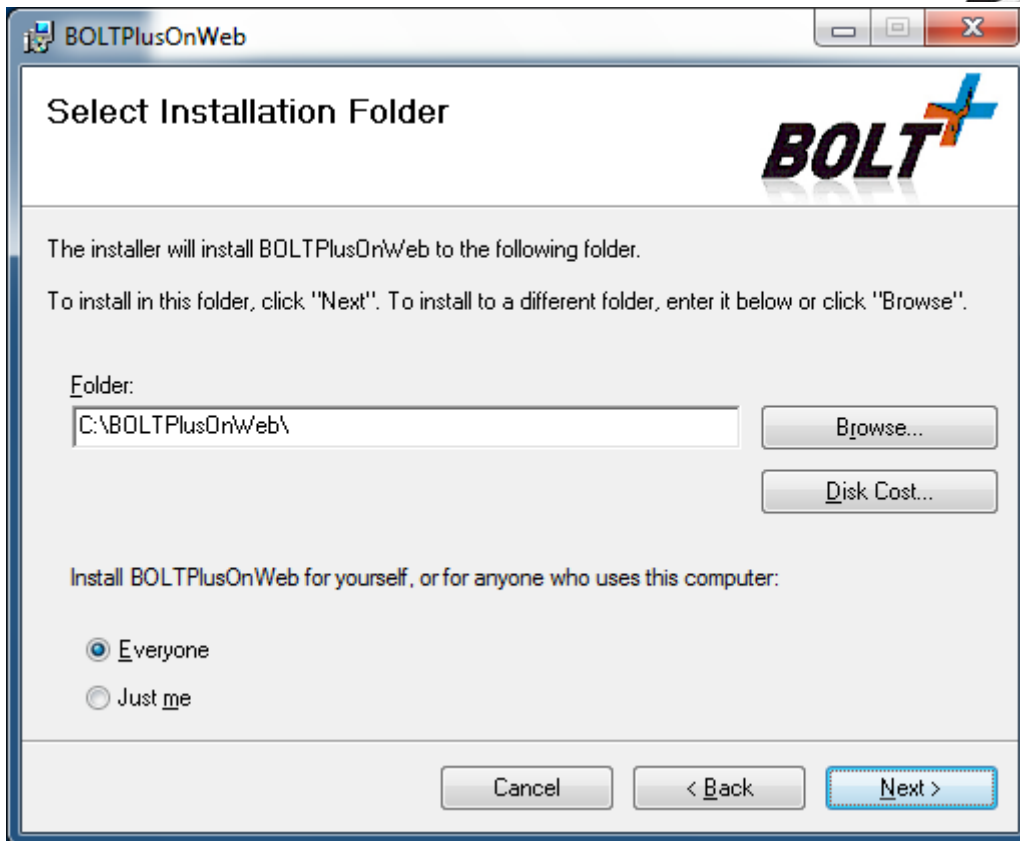
## BSE BOLT+ On Web INSTALLATION

Download the zip file and extract the installer from the zip file.

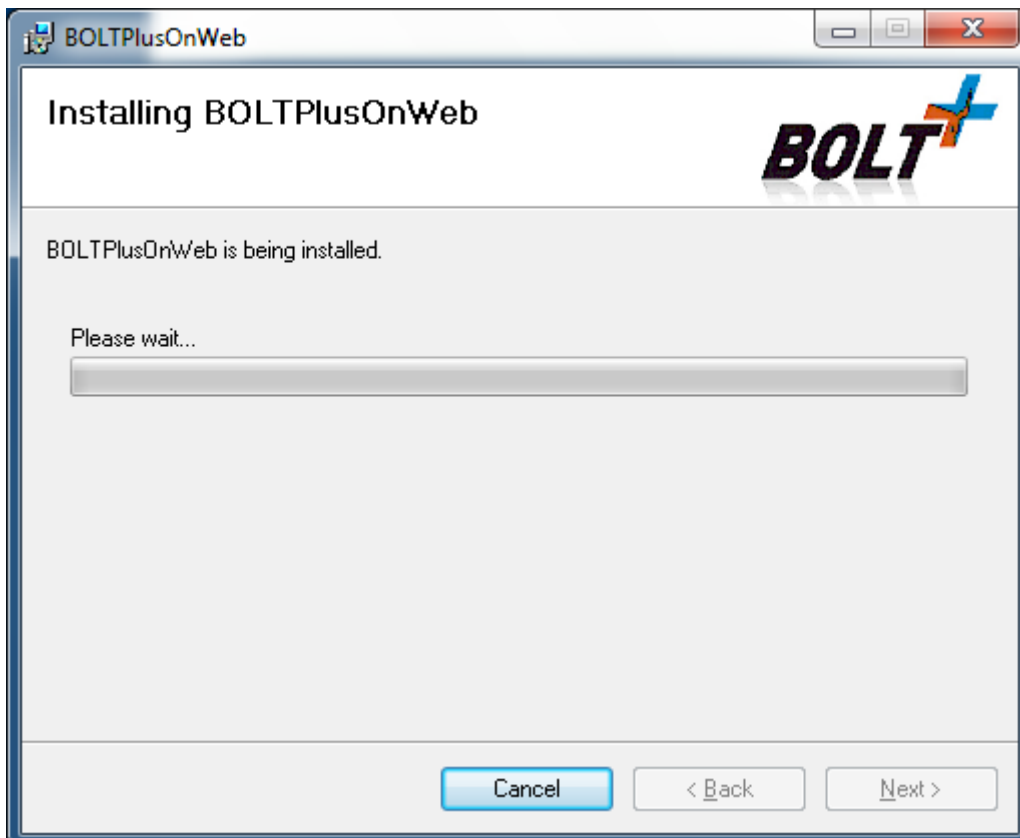
Run the installer



Choose the Program installation directory



Note: If you are facing issues in Windows 7 and vista then install it in another Drive.





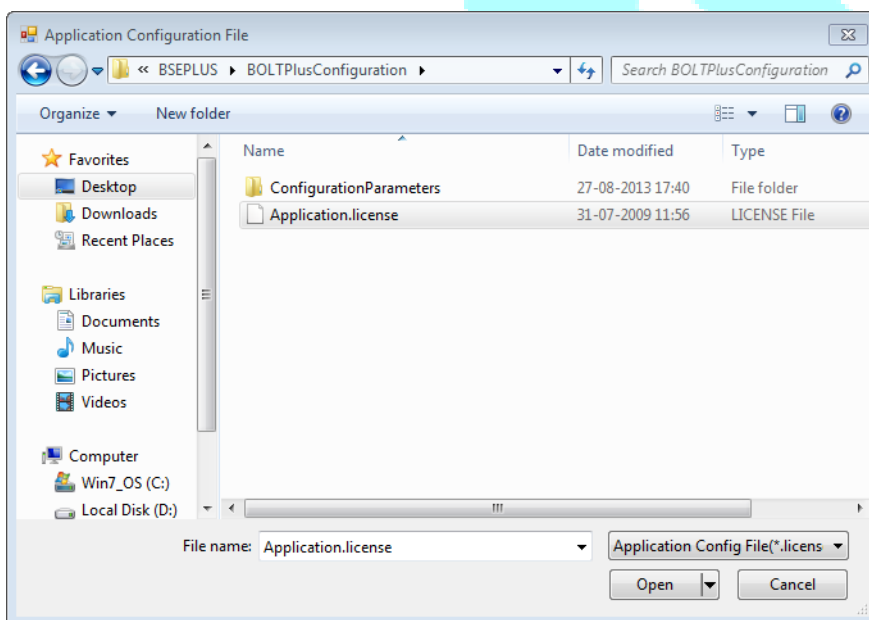
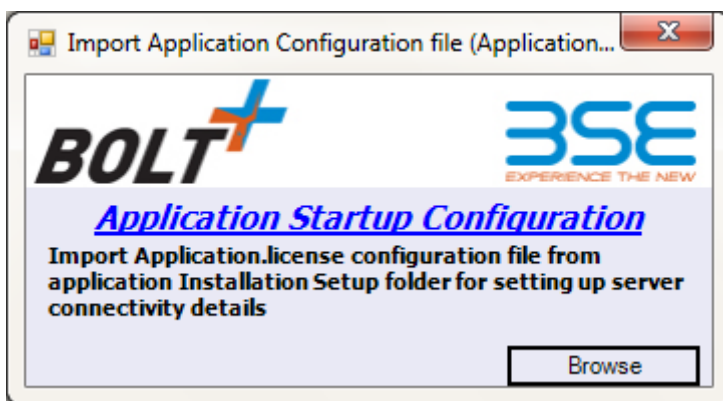
Once installation is complete BOLT+ On Web icon would be created on the desktop.

Double click or right-click and start the application.



Once login the Application would prompt the user to update the required license.

Click on "Browse" and select the Application.license file as shown below.



After the setup is successfully completed, installer will prompt whether you wish to start BSE BOLT+ On Web

## Web Upload links

### Member Upload Link

<https://boltplusonwebuploads.bseindia.com>

## F.A.Q FREQUENTLY ASKED QUESTIONS

Some of the frequently asked questions are

Q The application does not start or exits at start giving an error

A. Dot net Framework 4.0 has not been installed please install it .

2. On opening of Order/Trade / Net Position the application crashes

A. Dotnet framework 4.0 has not been installed please install it from the link given above

3. I am receiving an error "Underlying connection has been closed"

Connectivity to the BSE BOLT+ On Web has been lost. Please check your connectivity

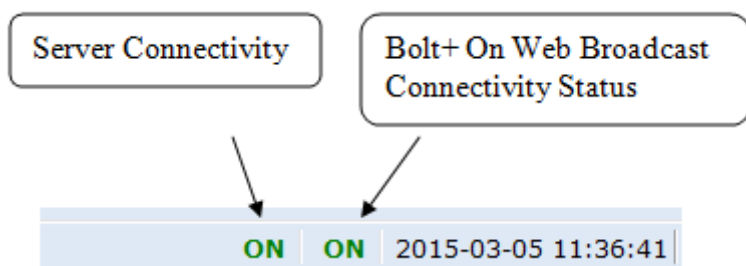
4. I am getting a 407 authentication error

The internet connectivity that you use requires authentication kindly enter your proxy and authentication details in the Connection settings window

5. I am unable to receive broadcast

BOLT+ On Web requires that the Ports 9092 for Broadcast.

In case of no broadcast Please check on Status Bar



If the Server Connectivity and broadcast Connectivity is showing Off with Red Status then the connectivity with the broadcast server is broken please check connectivity.

OFF OFF 2015-03-05 11:36:41

If you are able to open the various reports but are unable to get broadcast please check whether you are able to connect to the Port 9092 of the server given in the connection settings.

To find manually whether your Port is opened

Find your Server IP in the Login Window -> Connection settings -> Server IP Address

The screenshot shows the 'Login' window with the 'Connection Settings' tab selected. The 'Select connection Type' is set to 'LEASED LINE'. Under 'Main Server Settings', the 'IP Address' is '10.1.101.116:6080/stocks'. Under 'Interactive Settings', the 'IP Address' is '10.1.101.116:9092'. Under 'Broadcast Settings', 'Broadcast Over HTTP' is unchecked, and 'Connection Type' is set to 'Dial Up'. Under 'FTP Settings', the 'FTP Server' is '10.1.101.116', 'UserName' is 'bseftp', and 'Pwd' is masked. At the bottom, there is a 'Save' button and contact information: 'Contact Us : +91 22 2272 8080'.



7. The BSE BOLT+ On Web system crashes on Windows Vista/ Windows 7 even after the patch?

Please install in a location other than Program Files and check.

## CONTACT US

Phone - +91 22 2272 8080/8042/8889/

Email - [boltpusonweb@mkctech.in](mailto:boltpusonweb@mkctech.in) / [boltpusonweb@bseindia.com](mailto:boltpusonweb@bseindia.com)

Or for business and membership or any other queries at BSE you can contact your assigned relationship manager at BSE.